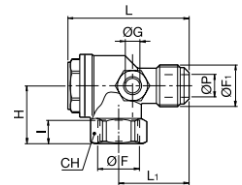


VH HM VALVULA HORIZONTAL HEMBRA/MACHO



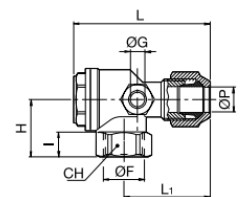
CODIGO	F	F1	P	I	G	H	L	L1	CH	Gr
VH38HM	3/8	3/8	9	11	6	23	48.5	28	20	
VH12HM	1/2	1/2	11	12.5	6	27	62	36	26	



VH HB VALVULA HORIZONTAL HEMBRA/BICONO



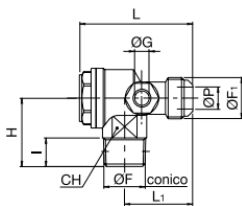
CODIGO	F	F1	P	I	G	H	L	L1	CH	Gr
VH0838HB	3/8	8	11	6	23	57.5	57.5	37.5	20	
VH1038HB	3/8	10	11	6	23	55.5	55.5	35.5	20	
VH1212HB	1/2	12	12.5	6	27	70.5	70.5	45.5	26	
VH1412HB	1/2	14	12.5	6	27	70.5	70.5	45.5	26	
VH1512HB	1/2	15	12.5	6	27	70.5	70.5	45.5	26	



VH MM VALVULA HORIZONTAL MACHO/MACHO



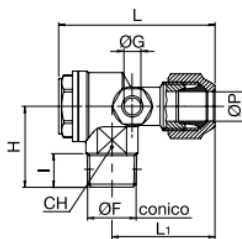
CODIGO	F	F1	P	I	G	H	L	L1	CH	Gr
VH3838MM	3/8	3/8	9	11	6	27.5	47.5	30	19	
VH1238MM	1/2	3/8	9	12.5	6	30	49	28.5	22	
VH1212MM	1/2	1/2	11	12.5	6	30	60.5	37.5	22	
VH3412MM	3/4	1/2	11	12	6	32	60.5	35	28	



VH MB VALVULA HORIZONTAL MACHO/BICONO



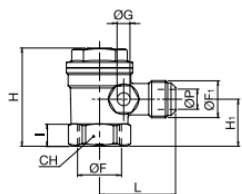
CODIGO	F	P	I	G	H	L	L1	CH	Gr
VH0838MB	3/8	8	11	6	26.5	58	40	19	
VH1038MB	3/8	10	11	6	26.5	55	37	19	
VH1012MB	1/2	10	12.5	6	30	57	36	22	
VH1212MB	1/2	12	12.5	6	30	59.5	38.5	22	
VH1412MB	1/2	14	12.5	6	31	68.5	46	22	
VH1512MB	1/2	15	12.5	6	31	71	48.5	22	
VH1234MB	3/4	12	12	6	32	69	44	28	
VH1434MB	3/4	14	12	6	32	69.5	44.5	28	
VH1534MB	3/4	15	12	6	32	70.5	45.5	28	



VV HM VALVULA VERTICAL HEMBRA/MACHO



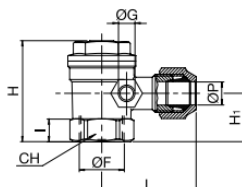
CODIGO	F	F1	P	I	G	H	H1	L1	CH	Gr
VV1238HM	1/2	3/8	9	11	6	44.5	21.5	34	25	
VV1212HM	1/2	1/2	11	12.5	6	53.5	25	37	27	
VV3412HM	3/4	1/2	11	12	6	56.5	26.5	39.5	32	
VV3434HM	3/4	3/4	14	12	6	56.5	26.5	39.5	32	



VV HB VALVULA VERTICAL HEMBRA/BICONO



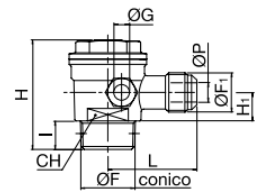
CODIGO	F	P	I	G	H	H1	L	CH	Gr
VV1012HB	1/2	10	12.5	6	44.5	21.5	41	25	



VV MM VALVULA VERTICAL MACHO/MACHO



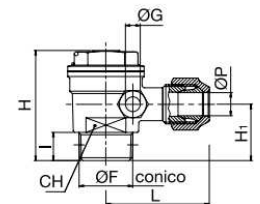
CODIGO	F	F1	P	I	G	H	H1	L	CH	Gr
VV1238MM	1/2	3/8	9	12.5	6	47.5	12	34	26	
VV3412MM	3/4	1/2	11	13.5	6	55	13.5	36	33	
VV1034MM	1"	3/4	15	16	6	67	16	45	43	



VV MB VALVULA VERTICAL MACHO/BICONO



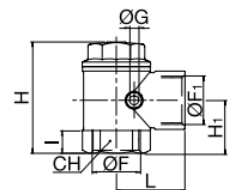
CODIGO	F	P	I	G	H	H1	L	CH	Gr
VV1012MB	1/2	10	12.5	6	48	12	42	26	
VV1234MB	3/4	12	13.5	6	55	13.5	46.5	33	
VV1434MB	3/4	14	13.5	6	55	13.5	47	33	
VV1534MB	3/4	15	13.5	6	55	13.5	48	33	
VV1810MB	1"	18	15	6	67	16	57	43	



VV HH VALVULA VERTICAL HEMBRA/HEMBRA



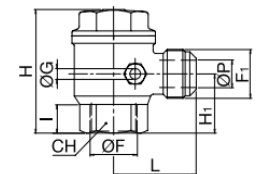
CODIGO	F	F1	I	G	H	H1	L	CH	Gr
VV10HH	1"	1"	22	6	73	35.5	46.5	40	



VV HMX VALVULA VERTICAL MACHO/HEMBRA MAXI



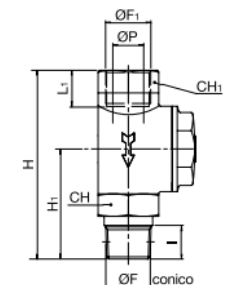
CODIGO	F	F1	P	I	G	H	H1	L	CH	Gr
VV34HMX	3/4	3/4	15	14.5	6	68	32	45	33	



VL HM VALVULA EN LINEA HEMBRA/MACHO



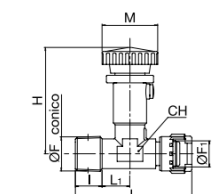
CODIGO	F	F1	P	I	L1	H	H1	CH	CH1	Gr
VL12HM	1/2	1/2	14	15	18	84	49	27	27	



VT VALVULA DE TARADO A BAYONETA



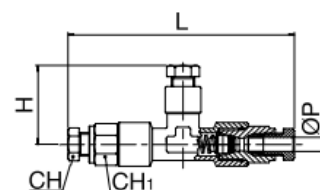
CODIGO	F	F1	I	H	L	L1	CH	M	Gr
VT3814	3/8	1/4	11.5	44	50.5	12	17	26.5	



VHU VALVULA UNIDIRECCIONAL



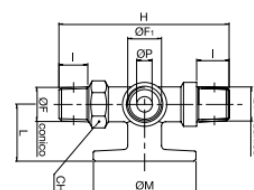
CODIGO	P	H	L	CH	CH1	Gr
VHU6	6	31	89	12	14	



PMB PORTAMANOMETRO CON BRIDA



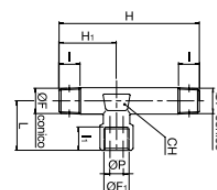
CODIGO	F	F1	P	I	H	L	CH	M	Gr
PMB14	1/4	1/4	6	11	65	21.5	17	39.5	



PMS PORTAMANOMETRO SIMPLE



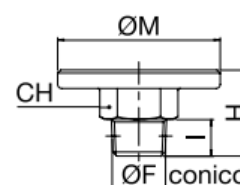
CODIGO	F	F1	P	I	L1	H	H1	L	CH	Gr
PMS14	1/4	1/4	7	11	11	72	42.5	25	14	



BCA BRIDA CONTROL DE ANCLAJE



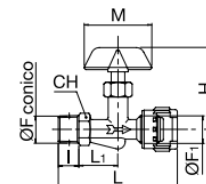
CODIGO	F	I	H	CH	M	Gr
BCA14	1/4	9	21	17	39	



GPAT GRIFO DE PALOMETA CON TUERCA



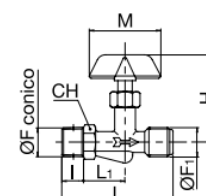
CODIGO	F	F1	I	H	L	L1	CH	M	Gr
GPAT1814	1/8	1/4	9	37.5	46.5	16	13	34	
GPAT1414	1/4	1/4	11	44	59.5	21	15	43	
GPAT3814	3/8	1/4	11.5	44	59.5	20.5	15	43	
GPAT1214	1/2	1/4	12.5	44	63.5	23.5	22	43	



GPA GRIFO DE PALOMETA



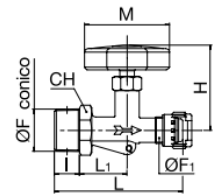
CODIGO	F	F1	I	H	L	L1	CH	M	Gr
GPA1814	1/8	1/4	9	37.5	46.5	16	13	34	
GPA1414	1/4	1/4	11	44	59.5	21	15	43	
GPA3814	3/8	1/4	11.5	44	59.5	20.5	15	43	
GPA1214	1/2	1/4	12.5	44	63.5	23.5	22	43	



GPOT GRIFO DE POMO CON TUERCA



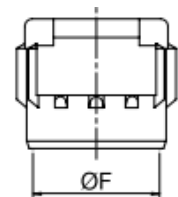
CODIGO	F	F1	I	H	L	L1	CH	M	Gr
GPOT1414	1/4	1/4	11	44.5	59.5	21	15	45	
GPOT3814	3/8	1/4	11.5	44.5	59.5	20.5	15	45	
GPOT1214	1/2	1/4	12.5	44.5	63.5	23.5	22	45	



TBA TUERCA BAYONETA



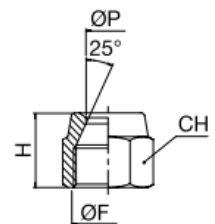
CODIGO	F	Gr
TBA14	1/4	



TBI TUERCA BICONO



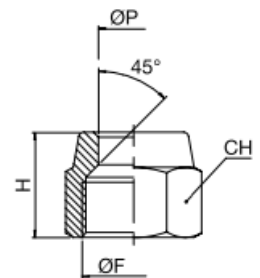
CODIGO	F	P	CH	H	Gr
TBI1038	3/8	10	19	16	
TBI1238	3/8	12	19	18.5	
TBI1212	1/2	12	24	22	
TBI1412	1/2	14	24	21	
TBI1512	1/2	15	24	21	
TBI1634	3/4	16	30	24	
TBI1834	3/4	18	30	24	



TTR TUERCA DE BLOQUEO P/TUBO REBORDEADO



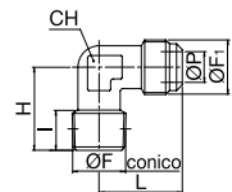
CODIGO	F	P	CH	H	Gr
TTR1038	3/8	10	19	16	
TTR1238	3/8	12	19	16	
TTR1212	1/2	12	24	20	
TTR1412	1/2	14	24	20	
TTR1512	1/2	15	24	20	
TTR1612	1/2	16	24	20	
TTR1634	3/4	16	30	23	
TTR1834	3/4	18	30	23	
TTR2034	3/4	20	30	23	



CMS CODO MACHO SMUSSO 45°



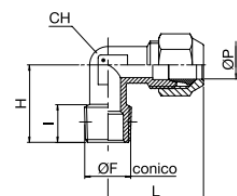
CODIGO	F	F1	P	I	H	L	CH	Gr
CMS3838	3/8	3/8	9	11.5	27	27	14	
CMS3812	1/2	3/8	9	14	28	28	17	
CMS1212	1/2	1/2	11	14	28	28	17	



CMSB CODO MACHO SMUSSO 45° CON BICONO



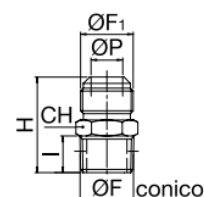
CODIGO	F	P	I	H	L	CH	Gr
CMSB1038	3/8	10	11.5	27	34.5	14	
CMSB1238	3/8	12	11.5	27	38	14	
CMSB1012	1/2	10	14	28.5	40	17	
CMSB1212	1/2	12	14	28.5	42	17	
CMSB1412	1/2	14	14	30	43	17	
CMSB1512	1/2	15	14	30	43	17	



RMS RECTO MACHO SMUSSO 45°



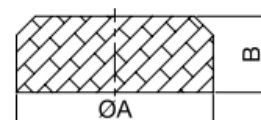
CODIGO	F	F1	P	I	H	CH	Gr
RMS3838	3/8	3/8	9	11.5	30	17	
RMS1238	1/2	3/8	9	11.5	33	22	
RMS1212	1/2	1/2	11	14	35.5	22	
RMS3434	3/4	3/4	16	16	41.5	27	



CVR CIERRE PARA VALVULA DE RETENCIÓN



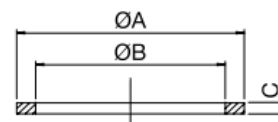
CODIGO	A	B	Gr
CVR10NBR	15.5	8.5	
CVR15NBR	15.5	6.5	
CVR10VITON	15.5	8.5	
CVR15VITON	15.5	6.5	
CVR20VITON	17	9	
CVR25VITON	20.5	8	
CVR30VITON	26	10	



JAO JUNTA ALUMINIO P/VALVULA DE RETENCIÓN



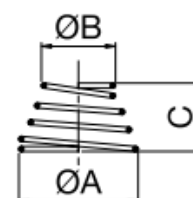
CODIGO	A	B	C	Gr
JAO15	27	24.3	1	
JAO25	33.5	30.4	1	
JAO30	43	38.4	1	
JAO34	36	32.3	1	
JAO17,17x1,78	22.33	18.77	1.78	
JAO18,77x1,79	20.73	17.17	1.78	



MTU MUELLE P/VALV. DE RETENCIÓN TARADO UNIDIRECCIONAL



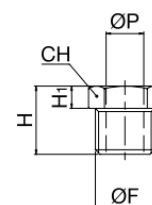
CODIGO	A	B	C	Gr
MTU15	16.3	10	9.5	
MTU20	18.2	11.5	16	
MTU25	21.8	11.5	11.5	
MTU30	27.2	14	15	
MTU45	8	8	21	
MTU50	7.5	7.5	29.5	



PBI PRENSABICONO



CODIGO	F	P	H	H1	CH	Gr
PBI18	1/8	6	13	4.5	12	
PBI14	1/4	8	16	5	14	



BVR BICONO



CODIGO	A	Gr
BVR6	6	
BVR8	8	
BVR10	10	
BVR12	12	
BVR14	14	
BVR15	15	
BVR16	16	
BVR18	18	

